

GLOMOR

PROFESSIONAL

Silk Protein Collagen

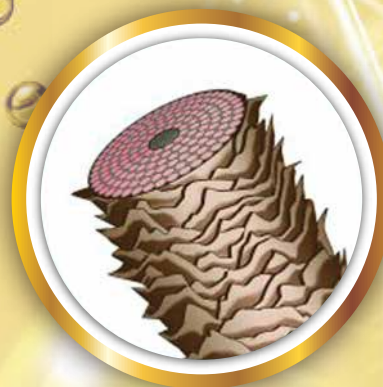
real collagen
support in
hair care

COLLAGEN



It is a natural protein found in the hair structure. External factors and aging decrease the level of collagen in the hair. This causes the proteins involved in the development of hair to not be produced. Collagen supplement reduces hair loss.

PROTEIN



72% of hair consists of natural proteins. a single strand of hair is formed by the heating of many proteins.

GLOMOR

PROFESSIONAL

*Silk protein combined with
3 miraculous effects...*



Color Fixation
Protection Before Chemical Treatment
Brighter And Livelier Hair

IN THE CONTENT OF GLOMOR SILK PROTEIN COLLAGEN
HAIR CARE

"Silk protein", which is obtained in very few numbers from wild silkworms, is 100% natural, 100% pure, moisturizing, nourishing, and provides protection from uv rays, is used.

Silk protein contains valuable amino acids, especially sericin and fibroin obtained from silk cocoons.

The most important of these amino acids is the waxy layer called "Sericin" that surrounds the outside of the silk cocoon.

"Sericine" provides the protection of the silk cocoon against the external environment and preserves the moisture balance of the silk cocoon.

The main benefits of sericin;

- antioxidant,
- moisturizer,
- nutritious items,
- from uv rays
Protector

Main benefits of fibroin;

- insulating property,
- heat resistance,
- absorbs the liquid and traps it inside.

Sericin, high hydroxy amino acid content (approx. 46%) water binder, which regulates the moisture content of the hair.

Has the capacity. In addition, the unique amino acid sequence is the light scattering effect. In this way, it eliminates the harmful effects of the sun against the hair, giving it a radiant appearance.

Sericin, with its high molecular weight, on the hair This durable semi-covering film does not fade even after washing and protects the hair from harmful environmental influences. The sericin film layer leaves the hair soft and silky.





1. MIRACULOUS EFFECT

With its silk protein content, it is a revolutionary product used in the hair removal process, which does not break the hair while opening, does not break, even prevents breakage and breakage.

It makes the hair ready by repairing the structure of the hair for lightening and dye protection process.

In the hair that comes to a healthy state by recovering the deteriorations in the hair structure, it minimizes the losses due to hair breakage in the opening process, and regulates the dyeing and lightening process of the hair in a healthy way and the process reaches the desired tone.

It is possible to try the application of our glomor professional silk protein product in specialized hairdressing salons.

On damaged and worn hair, the hair removal process is performed without damaging the hair.

By acting directly on the hair structure, it strengthens the hair structure and increases its resistance.

Method of Application
its use in the bleaching process;

+ 2gr silk protein into 10gr opener prepared during the opening process; Prepare the mixture as in the table for the sample (10 g silk protein in 50 g prepared opener), be careful to mix thoroughly until it becomes homogeneous.



2. MIRACULOUS EFFECT

Colors after hair dyeing processes, according to the health of the hair, fades and flows in a short time.

Reflections and hair color integrity causes it to break. this is not done by any woman It is undesirable.

The chemical processes carried out to create process.

Glomor professional silk protein collagen product gives hair after the pigment dyeing process, it fixes the color in the hair, ensures long-lasting coloration service at the best level it is a supportive product.

- To obtain healthier results by increasing the resistance of the hair. provides.

- As this product continues to repair the bonds in the hair, it allows the hair to maintain its strength and health between treatments.

Method of Application
use of paint stabilizer;

- Rinse the dye off the hair carefully and then apply it if you are going to make a brightening direct pigment or dye treatment.

- After the processing time has expired, remove the products you use from the hair.

Rinse carefully and remove all the get moisture.

- Apply the silk protein to the hair at the bottom length and leave it for at least 10 minutes after combing and feeding it into the hair.

- Complete the process by drying the hair completely at the end of the waiting period.

- For long-term and permanent results, do not forget to use the glomor silk protein shampoo and mask set, which is a follow-up product.



3. MIRACULOUS EFFECT

Hard, dry, dull, treated, worn and problematic swelling It is very effective on hair. shows immediate effect. as well as protein and Increases the amino acid level to the maximum level.

Glomor silk protein collagen covers your hair with a protective layer, preventing wear and fractures that may occur against the processes. make your hair look soft, silky and shiny provides.

The satisfaction rate is very high, especially in ruffle hair.

It is a product that takes the form of the hair to its peak after the application process. It will give your hair a perfect look by peaking its softness and shine.

Makes hard-to-comb hair very easy to comb. It maintains the moisture content of your hair. thus preventing hair breakage and breakage.

It doubles the satisfaction with its feature of softening the hair fiber.

It acts as a protection on your hair with the botox effect.

It certainly does not change the color of your hair during application.

Visibly shine and a soft texture feeling in your hair gives. Worn after application in order to get high efficiency from the product.

Make sure to use the glomor silk protein shampoo and mask set for your hair. We recommend that you use it.

Method of Application
use of botox;

- Wash the hair with the first treatment shampoo.
- Dehumidify the hair with a towel.

- Apply the product to the hair by applying the bottom, length, tip and friction.

- waiting time must be at least 20 minutes.

- At the end of the waiting period, dry the hair completely and press 130 to 180 degrees depending on the condition of the hair.